



# JOURDAIN

N° 1 MONDIAL DU TUBULAIRE BOVIN

JULY 2023



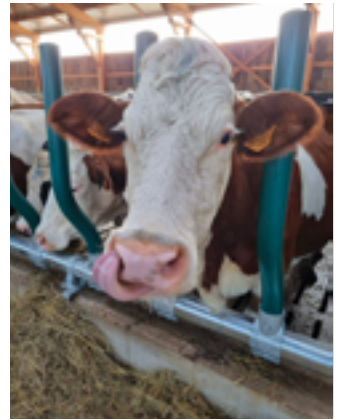
NEW PRODUCTS

*"JOURDAIN is once again striving to improve animal comfort and the working conditions of livestock handlers. By studying animal behaviour and your daily routine as closely as possible, our design office has developed product innovations and optimisations to offer you long-term support."*

always  
**INNOVATING**

NEW

## COMFORT PLUS SELF-SERVICE



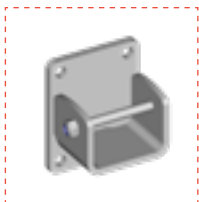
Designed to offer dairy cows optimal comfort, this self-service barrier is composed of curved HDPE elements providing comfort and limiting pressure on elements at the trough. A veritable innovation in the self-service category, it is not intended to replace a headlock and does not restrain the animal.

[WATCH THE VIDEO](#)

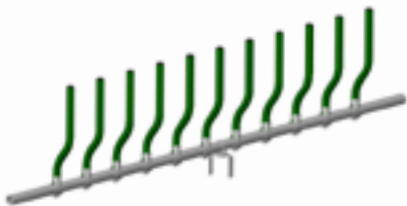


- The curved module is mounted to an OCTAGONAL  $\varnothing$  102 mm tube with a specific BLS 102/76 bracket.
- The OCTAGONAL  $\varnothing$  102 mm tube is intended to be cut on site and can be mounted onto an OCTAGONAL  $\varnothing$  102 mm post or between wooden posts or metal framework.

> AVAILABLE SOON IN COLOUR  
GREEN OR RED



**FE2132**  
WALL BRACKET  
COMFORT PLUS



**P00512**  
Comfort Plus Dairy Cows Self-Service  
12 spaces/5 m



**P00501**  
Green module



**P00503**  
Red module

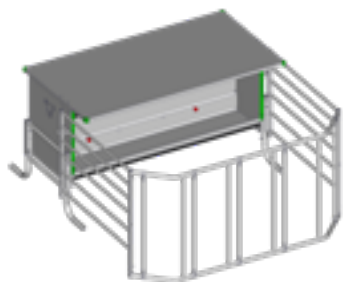


## 2.50 M CREEP FEEDER WITH RECLINABLE PEN



Intended to replace the 2 m and 2.80 m models and retaining both their shape and principle, this new galvanised-sheet-metal creep feeder offers a tank capacity of 1,180 litres and features a hatch to regulate feed distribution, a large tilting roof with internal reinforcement and two adjustable heights for the feet.

WATCH THE VIDEO



When lowered, the 2.50 m pen allows the equipment to act as a creep feeder and only provides entry to calves, with 5 adjustable entries.

With the pen raised, this can be used as a large-cattle feeder for adult animals.

Available soon, it will be delivered packaged with 3-point rear transport system. For road transport, please transport empty, with the pen raised, and follow current legislation.

NEW

## 2.50 M SHEEP HURDLE WITH MAN PASSAGE



Our sheep-hurdle range has been extended with a 2.50 metre-long 7-bar model, including a 1.10 metre-wide access gate for persons with quick opening and closing. This solution makes it easier to set up pens, as well as providing an element of security for livestock handlers, allowing them to travel from one pen to the other without having to climb over the hurdle.

[WATCH THE VIDEO](#)



Its width of 1.10 m has been designed to limit jostling during the passage of animals. This hurdle is made with two  $\varnothing$  27 mm uprights with a height of 1 m, and  $\varnothing$  20 mm horizontal bars welded on both sides for greater robustness.

> AVAILABLE SOON



The "Made in France" logo is a statement that manufacturers or distributors may display, under certain conditions, on their products to certify that they are of French origin if they:

- derive a significant portion of their value from one or more manufacturing stages located in France;
- have undergone their last substantial transformation in France (source: [www.economie.gouv.fr](http://www.economie.gouv.fr)).

For JOURDAIN, this definition of "Made in France" is insufficient, which is why we have created our own logo which involves a much greater commitment:

- the French manufacture of our products guarantees full control over the design, manufacture, quality control and logistics in-house at our Esrennes site (Loiret, France).



CATALOGUES  
NEW PRODUCTS  
ASSEMBLY  
VIDEO TUTORIALS



[WWW.JOURDAIN-GROUP.COM](http://WWW.JOURDAIN-GROUP.COM)